

ACM/RACK Panel Mounting Rack

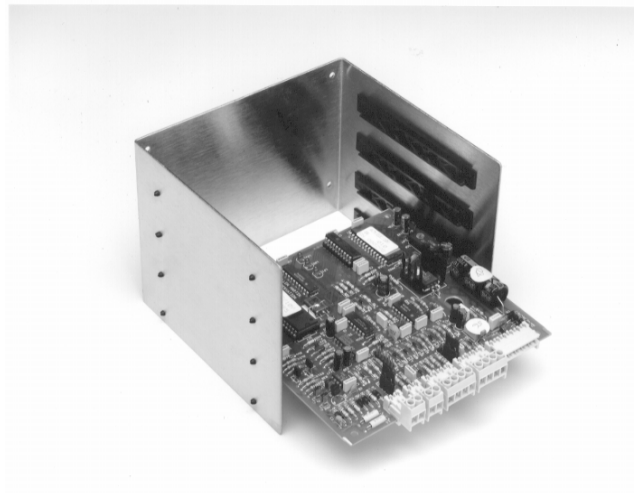


Overview

The ACM/RACK is a panel mounting rack that enables up to 4 outstation cards to be contained horizontally in a larger panel.

Several ACM/RACK's may be used to construct larger panels. The system has been so designed that in the event of service or maintenance the cards can be simply unplugged and removed without loss of control to the rest of the system.

The outstation cards contained may be any selection from the standard range available.



Specification

| | |
|-------------------------|--------------------------------|
| Enclosure : | Yellow zinc coated mild steel. |
| Dimensions : | 150mm (w) 142mm (d) 120mm (h). |
| Weight : | 700g |
| Storage temperature : | -65°C to 125°C |
| Operating temperature : | 0°C to 70°C |

| | |
|----------------|--|
| Terminations : | 4 * Outstation guides (suitable for fitting outstation cards, ACM/OUT, DDC2RLY, DDC0-10V etc). |
|----------------|--|
