

Odyssey

Dynamic Graphics

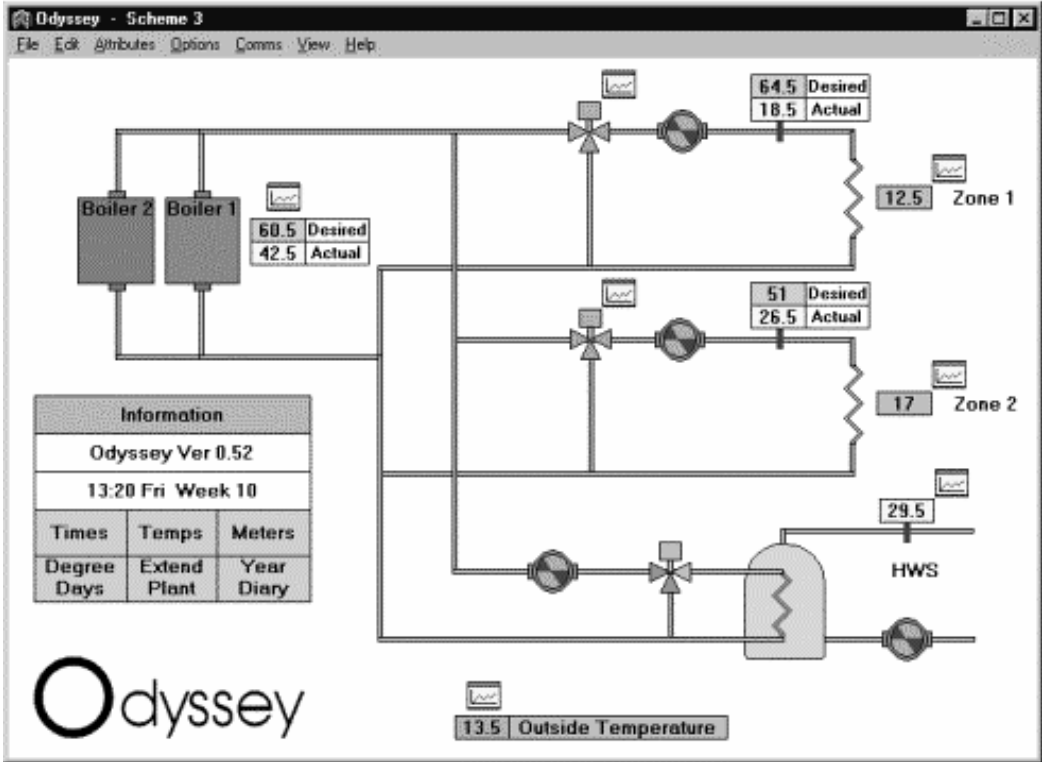


Description

An advanced dynamic colour graphics package is available for the Odyssey. This comprises of a single page plant schematic for each of the standard schemes, making Odyssey extremely user friendly.

The graphics offer full control of the Odyssey; allowing the operator to alter control parameters, observe operations and view temperature/time graphs on screen. Current alarm status can be viewed, meter readings can be taken, and local degree-day information uploaded. Data uploaded from the site controller can be stored on the PC for future reference and backup purposes.

An example of an Odyssey graphics scheme is shown below.



Odyssey graphics run under the Microsoft Windows 3.1, Windows 95, Windows 98 or Windows NT environments. A minimum hardware requirement would be:

- 486 PC running at 33MHz, with 8MB RAM
- Graphics card with 1MB RAM, capable of 1024x768 pixels with 256 colours
- SVGA monitor