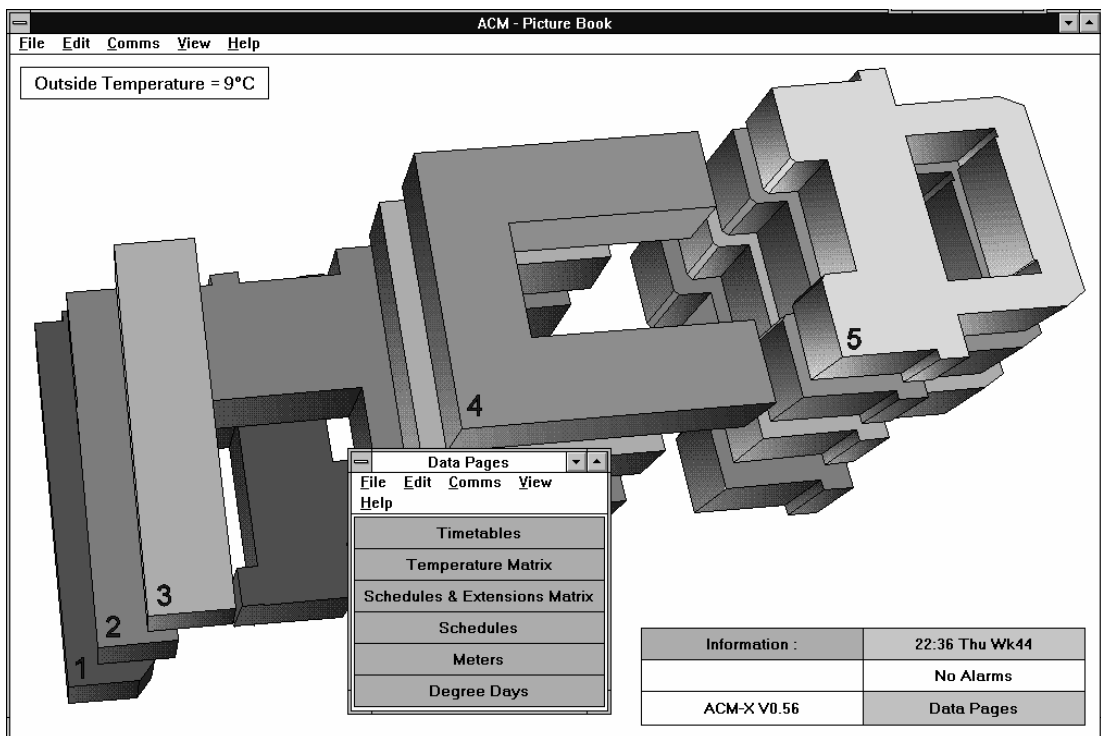


BOOKCASE Series Software

EMS Display System



PICTUREBOOK



PICTUREBOOK is the animated dynamic full colour display system for the ACM energy management system. The program gives day-to-day facilities for communicating with the site central processor, for observing operations and altering control parameters. Using PICTUREBOOK, it is simple to achieve the dual aims of the ACM system: optimum conditions together with maximum savings. A point and click technique means that no computer or keyboard skills are required.

Ease of use is achieved by using high-resolution graphics (1024 x 768 pixels). These provide for large, detailed building plans and plant diagrams that can be as simple or as technical as the user wishes. PICTUREBOOK features animated graphics: pumps and fans rotate, water flows within pipes and air flows within AHU ducts. This makes it simple to interpret current building status.

BOOKCASE Series Software

EMS Display System



PICTUREBOOK

PICTUREBOOK is used to upload the data from the controller. A daily routine might be established to check the status of all plant, or data can be "grabbed" quickly for zones that need urgent investigation, or the system can be left running in real time, permanently displaying current conditions in the building.

PICTUREBOOK is used to alter parameters when desired. Full access is given via the graphics to all features of the ACM system. System operation times can be set in advance for a whole year, or quickly modified at the last minute using the extensions facility. Comfort and frost temperatures can be changed in the individual zones and control temperatures on the plant itself can be fine tuned.

Current alarm status can be viewed, meter readings can be taken, and local degree day information uploaded. Data uploaded from the site controller can be stored on the computer for future reference and for backup purposes. Preset data logs can be viewed. Like all programs in the BOOKCASE series, PICTUREBOOK is a WINDOWS based program. This gives you full access to the industry standard operating system.

Multitasking means that while the ACM system is uploading data and monitoring the system, you can be continuing with other tasks: printing, word-processing etc.

Other BOOKCASE series programs include SKETCHBOOK for constructing the graphics, ALARMBOOK for real time alarm logging, PHONEBOOK for alarms that are audible and contact you via the public address, phone or bleep.



Computer Specification

Processor :	DX or SX 486, 33 MHz machine.
Ram :	At least 4 MByte of RAM (8 MBytes preferred).
Graphics Adapter :	Super VGA graphics adapter with 1 MByte of graphics RAM.
Mouse :	Microsoft-compatible mouse.
Hard Disk :	System requirement 10 MBytes.
Ports :	1 parallel, 1 serial port.
Monitor :	Super VGA.
Operating System :	Windows version 3.1, Windows 95, Windows 98 or Windows NT.