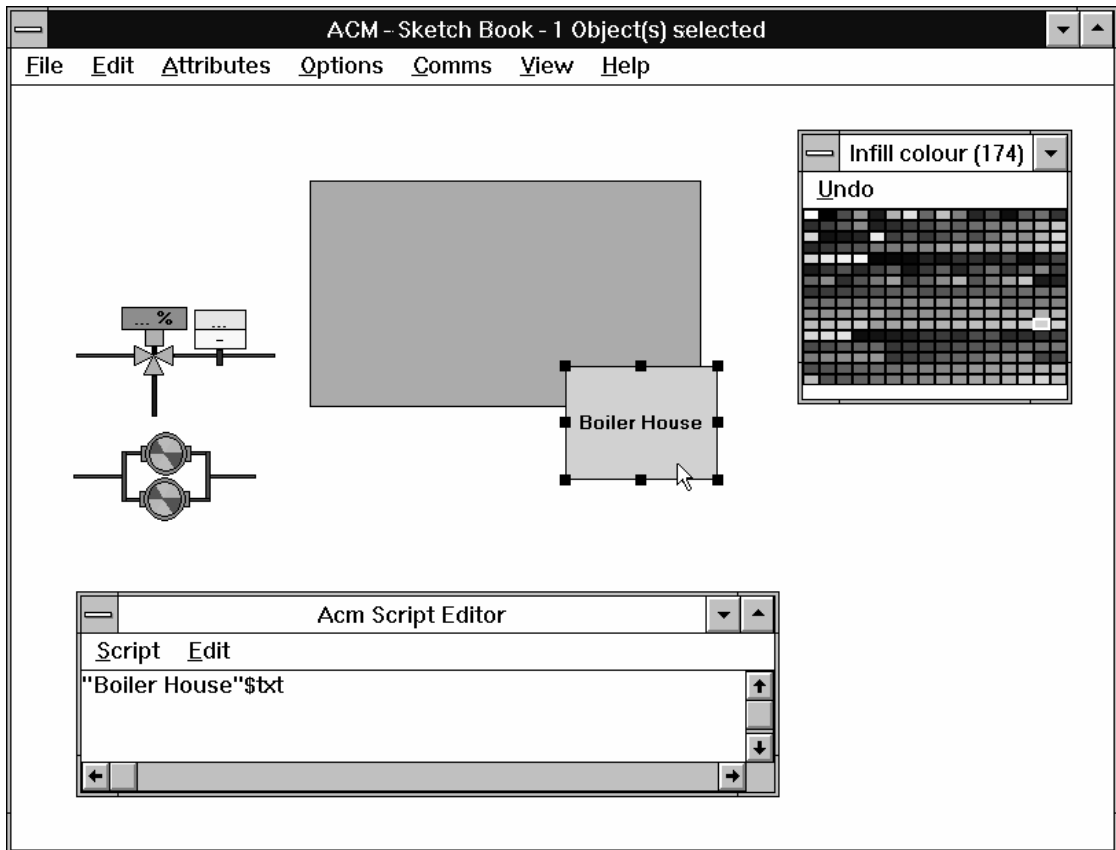


BOOKCASE Series Software

Graphic Construction Software



SKETCHBOOK



SKETCHBOOK is the package that enables you to construct or modify screen graphics.

Layouts that represent your buildings can be constructed and linked to a series of data pages to produce a fully representational and fully functional front-end display for the ACM energy management system.

Ease of use is achieved by using a mouse. A point and click technique means that no computer or keyboard skills are required. Ease of understanding is achieved by using high resolution graphics (1024 x 768 pixels). These provide for large, detailed building plans and plant diagrams that can be as simple or as technical as the user wishes.

BOOKCASE Series Software

Graphic Construction Software



SKETCHBOOK

The pages drawn form the basis of the PICTUREBOOK software package, which enables remote access to the controller.

SKETCHBOOK provides the drawing tools for constructing basic site layouts.

SKETCHBOOK provides tools to enable the graphic to be linked to the ACM system to enable temperatures to be represented, plant status and alarm conditions to be monitored.

SKETCHBOOK provides tools to enable animated drawings to be constructed, giving rotating pumps, rotating fans, water flow within pipes and air movement within air conditioning systems.

SKETCHBOOK gives facilities for the operator to test the graphic "on-line" as it is being constructed.

Other WINDOWS based programs can be used to enhance the appearance and realism of the finished graphic.

Graphic backdrops can be produced using proprietary drawing, painting and CAD programs.

Logos, maps and full colour photographs may be scanned in.

Images can be imported directly from a video camera or screen-grabbed from a video recorder.

Other BOOKCASE series programs include PICTUREBOOK for day-to-day system operation, ALARMBOOK for real time alarm logging, PHONEBOOK for alarms that are audible and contact you via the public address, phone or bleep.



Computer Specification

Processor :	DX or SX 486, 33 MHz machine.
Ram :	At least 4 MByte of RAM (8 MBytes preferred).
Graphics Adapter :	Super VGA graphics adapter with 1 MByte of graphics RAM.
Mouse :	Microsoft-compatible mouse.
Hard Disk :	System requirement 10 MBytes.
Ports :	1 parallel, 1 serial port.
Monitor :	Super VGA.
Operating System :	Windows version 3.1, Windows 95, Windows 98 or Windows NT.

If you wish to use the ability of SKETCHBOOK to scan photographs or use video images then third party software and hardware may be required. Allen-Martin can advise you of the possibilities.